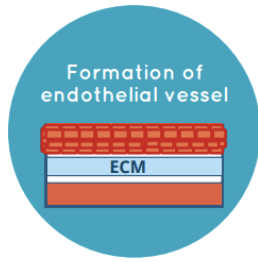


## 類器官晶片盤

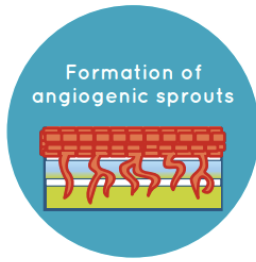
### 3 Step to Build Your Model



seed endothelial cells



allow vessel formation



induce angiogenic sprouting



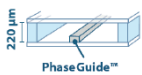
產品資訊

## OrganPlate®

### 類器官晶片盤

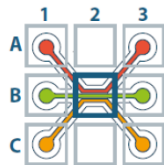
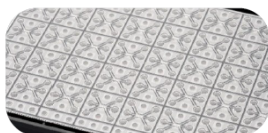
MIMETAS

#### OrganoPlate® 2-lane 96



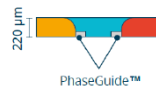
貨號: 9605-400-B

#### OrganoPlate® 3-lane 40



貨號: 4004-400-B

#### OrganoPlate® 3-lane 64



貨號: 6405-400-B

#### OrganoPlate® Graft



貨號: 6401-400-B



富利瀚生物科技有限公司  
FoliBio Technology Co., Ltd.

www.folbio.com.tw (02)2731-9370



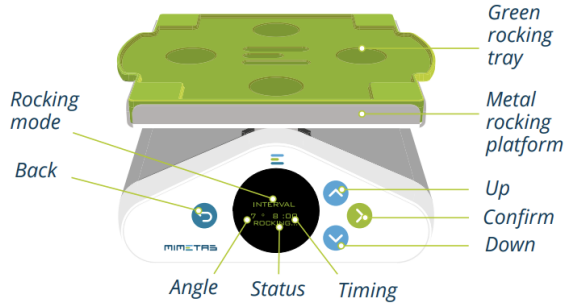
# Instruments

MIMETAS

## 晶片盤流動平台

### OrganoFlow®

Drive precisely-controlled perfusion flow in the OrganoPlate® platform



#### OrganoFlow features:

- Optimal control of perfusion flow in OrganoPlates
- Pump- and tube-free perfusion of your cultures
- Optimized time- and tilting angle settings, including interval rocking
- Suitable for use in standard tissue culture incubators
- Maintain flow in up to 16 OrganoPlates

	OrganoFlow® S	OrganoFlow® L
Dimensions LxWxH (cm)	16x16x8	45x16x8
Weight (kg)	1.3	2.4
Power consumption (W)	1.7	4.7
Maximum load	4 OrganoPlates®	16 OrganoPlates®
Maximum load (kg)	0.4	1.6
Sliding Tray	No	Yes
IP rating housing	IP54	
Tilt angle	0° to +25°	
Modes of operation	Interval or continuous	
Tilting interval	5s - 999 min	
Operating conditions	Up to 40°C (104°F) and 95% RH (non-condensing)	

## 晶片盤TEER屏障檢測儀

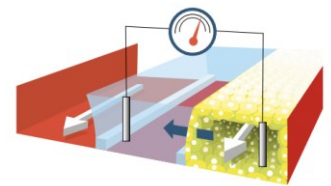
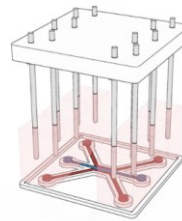
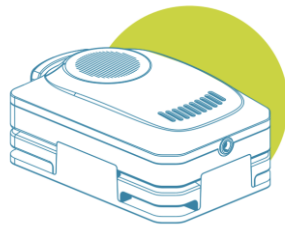
### OrganoTEER®

High-throughput automated TEER measurement platform

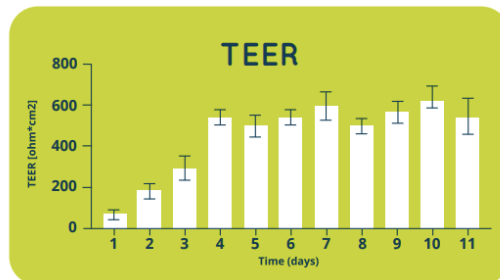


#### OrganoTEER® features:

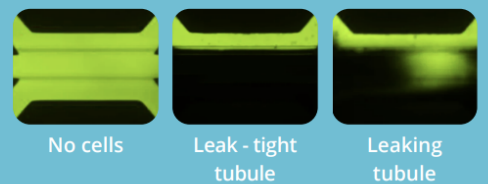
- Rapid barrier function assessment
- Time-lapse measurements
- Advanced analysis software
- Compatible with OrganoPlate® 3-lane 40 and OrganoPlate® 3-lane 64



Transepithelial/endothelial electrical resistance (TEER)  
跨上皮/內皮電阻



#### Barrier Integrity (BI) Assay



MIMETAS

# OrganStart Package

類器官晶片盤組

MIMETAS

 2-lane 96  3-lane 40  3-lane 64



5x OrganoPlate® 2-lane 96 / 5x OrganoPlate® 3-lane 40 / 5x OrganoPlate® 3-lane 64



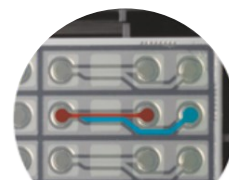
OrganoFlow®S



E-learning Module  
Including key reagents\*

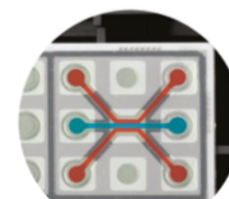


Consultancy  
by Field Application Specialist



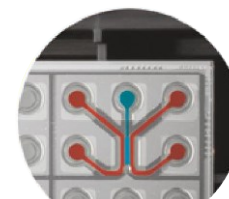
2-lane 96

貨號: MI-EL-AC-2L



3-lane 40

貨號: MI-EL-AC-3L40



3-lane 64

貨號: MI-EL-AC-3L64

 Graft



3x OrganoPlate® Graft



OrganoFlow®S



E-learning Module  
Including key reagents\*



Consultancy  
by Field Application Specialist



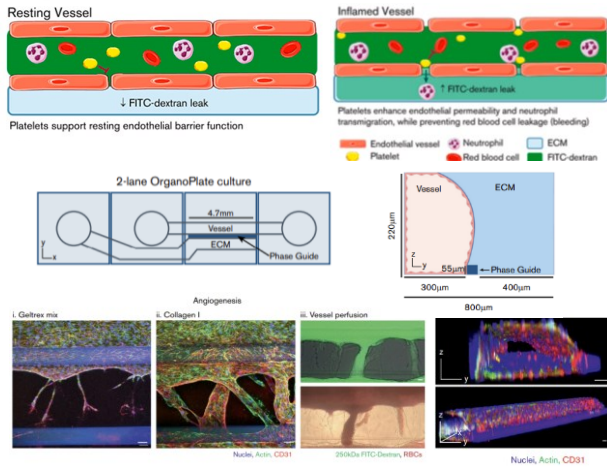
Graft

貨號: MI-EL-AC-GR

MIMETAS

### 2-lane 96

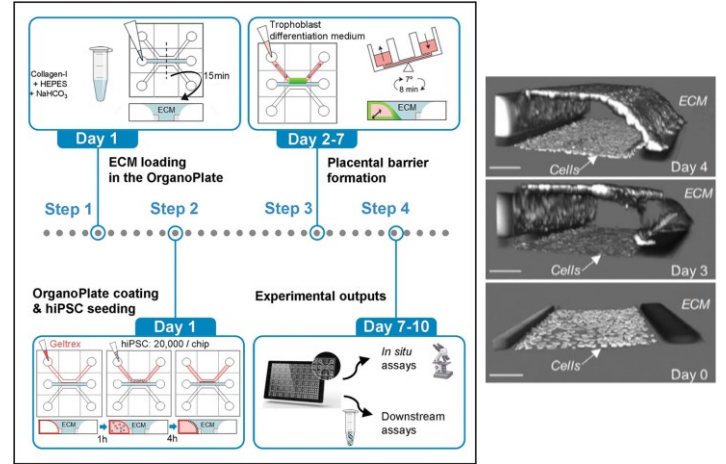
#### 血管發炎模型



文獻發表

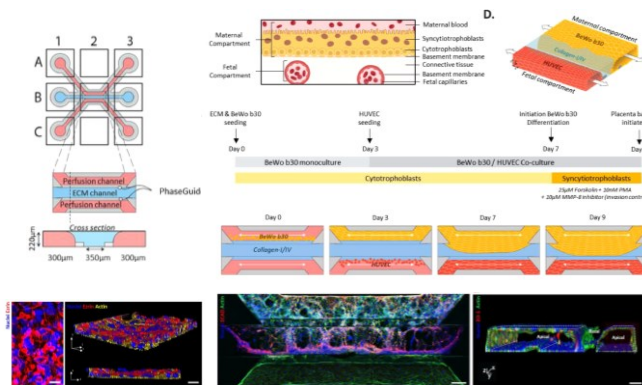
### 3-lane 40

#### 胎盤滋養層屏障模型



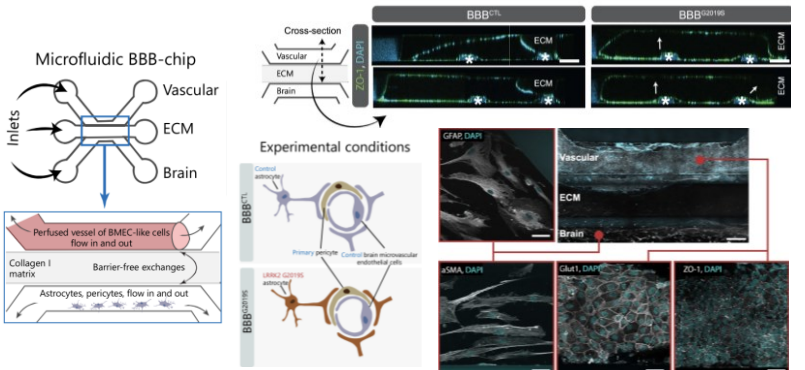
### 3-lane 40

#### 胎盤屏障模型



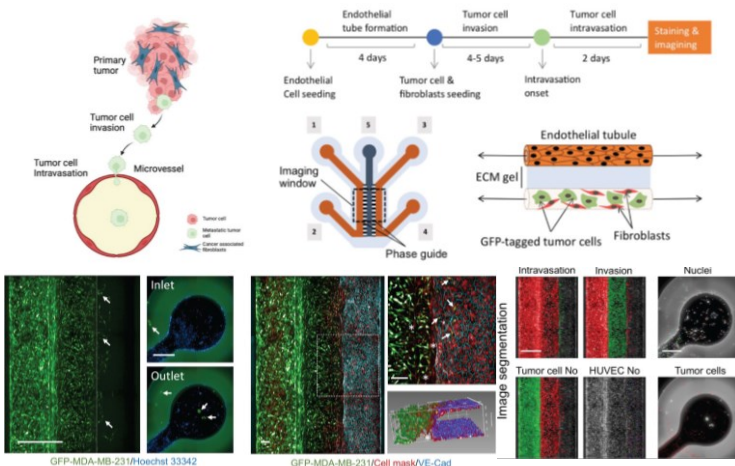
### 3-lane 40

#### 人體BBB屏障模型



### 3-lane 64

#### 癌症轉移藥物篩選模型



### Graft

#### 肝癌球體血管新生模型

